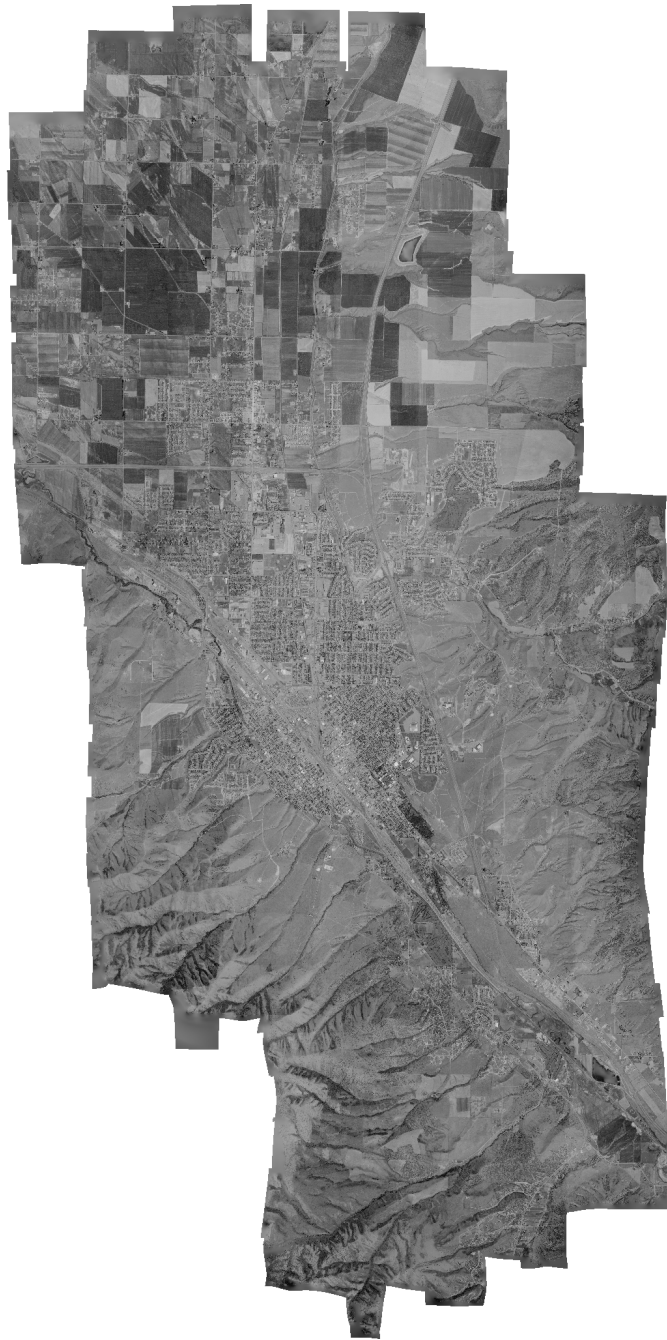


Agisoft PhotoScan

Processing Report

18 March 2015



Survey Data

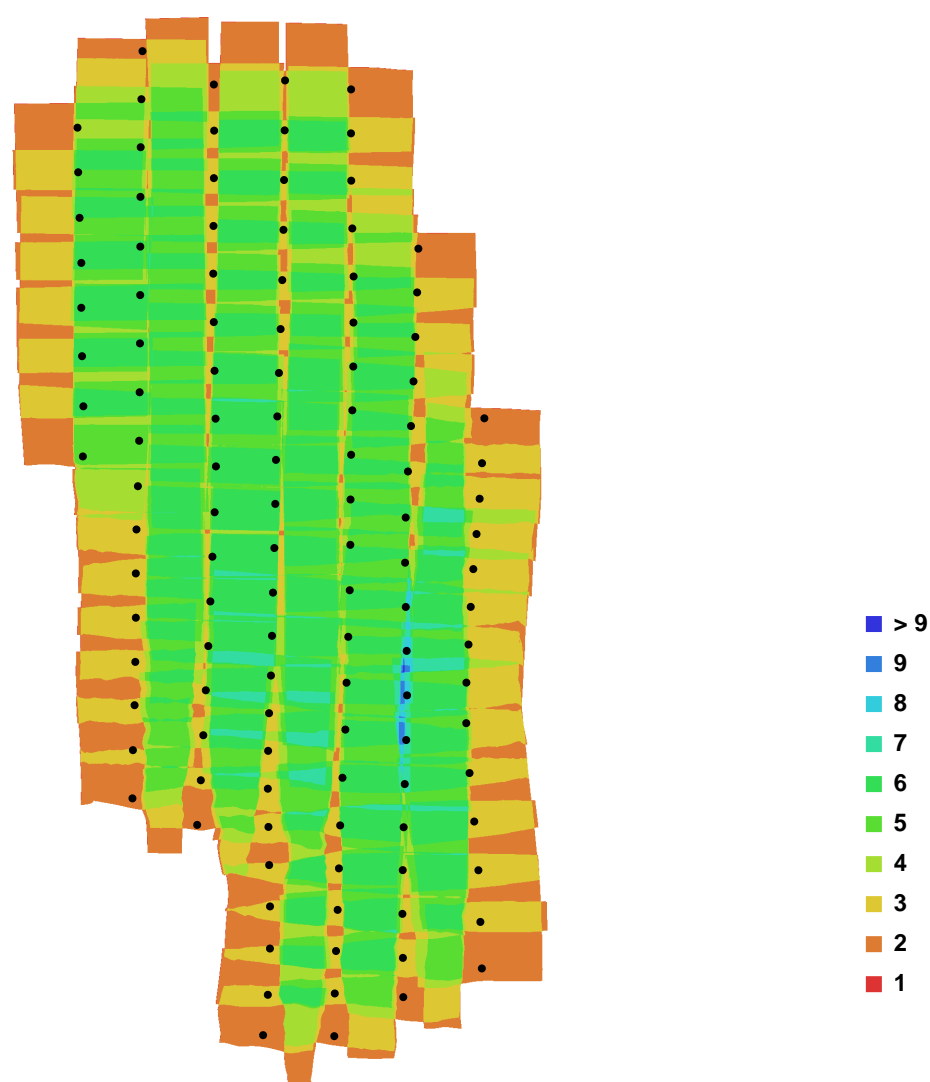


Fig. 1. Camera locations and image overlap.

Number of images:	122	Camera stations:	119
Flying altitude:	2156.1 m	Tie-points:	1127682
Ground resolution:	0.258385 m/pix	Projections:	2871974
Coverage area:	223.706 sq km	Error:	0.956677 pix

Camera Model	Resolution	Focal Length	Pixel Size	Precalibrated
unknown	11146 x 11146	152 mm	unknown	No
unknown	11242 x 11241	152 mm	unknown	No

Table. 1. Cameras.

Camera Calibration

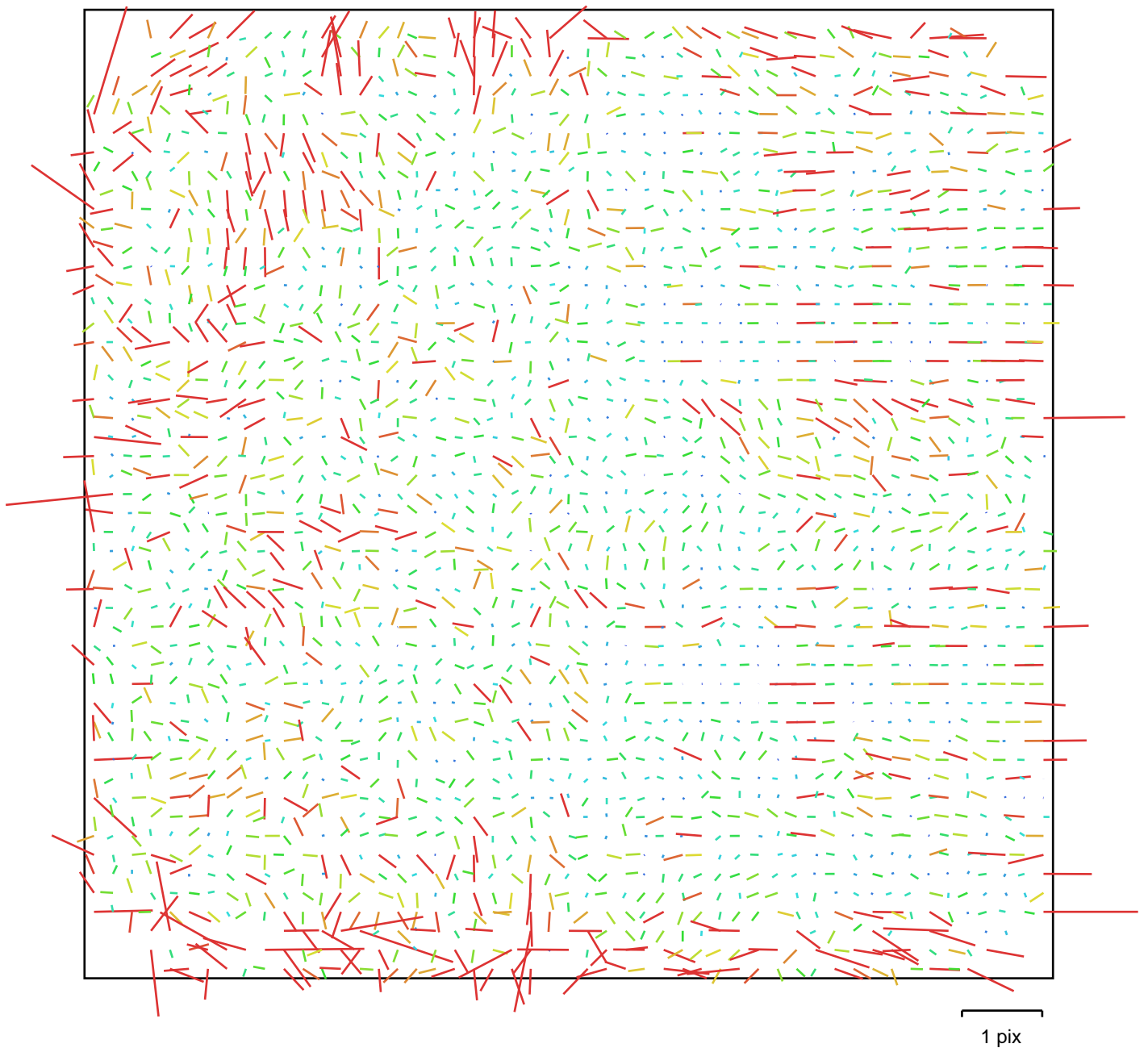


Fig. 2. Image residuals for unknown.

unknown

Type:	Frame	K1:	-0.000209087
Fx:	7236.1	K2:	-0.00118168
Fy:	7240.64	K3:	0.00365188
Cx:	5583.49	K4:	-0.00197738
Cy:	5657.13	P1:	7.21589e-005
Skew:	1.09258	P2:	-9.11104e-005

Camera Calibration

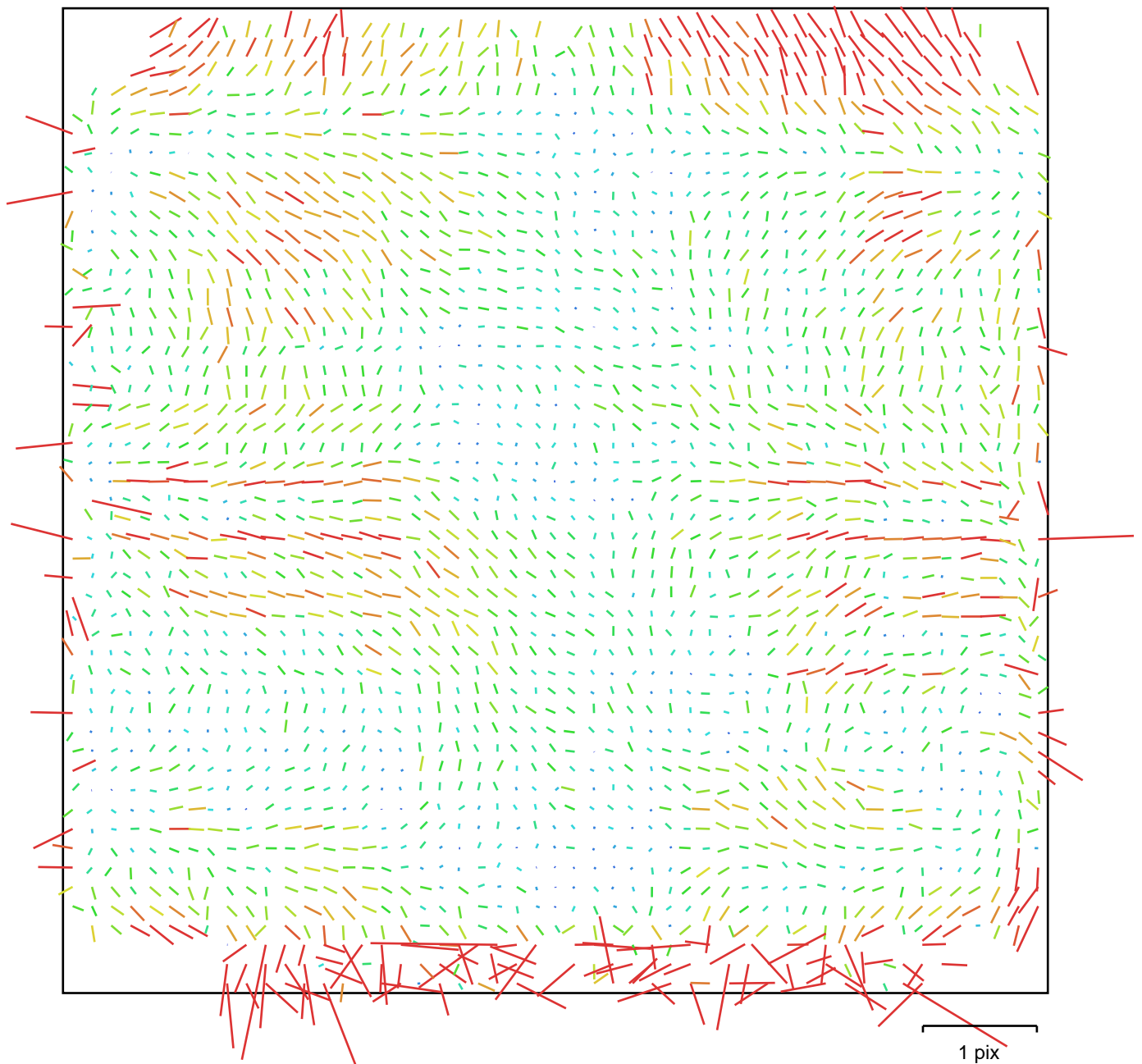


Fig. 3. Image residuals for unknown.

unknown

Type:	Frame	K1:	-0.000938065
Fx:	7284.98	K2:	0.00137882
Fy:	7289.08	K3:	6.44107e-005
Cx:	5625.37	K4:	-0.000247532
Cy:	5721.18	P1:	4.21819e-005
Skew:	0.710641	P2:	1.71565e-005

Ground Control Points

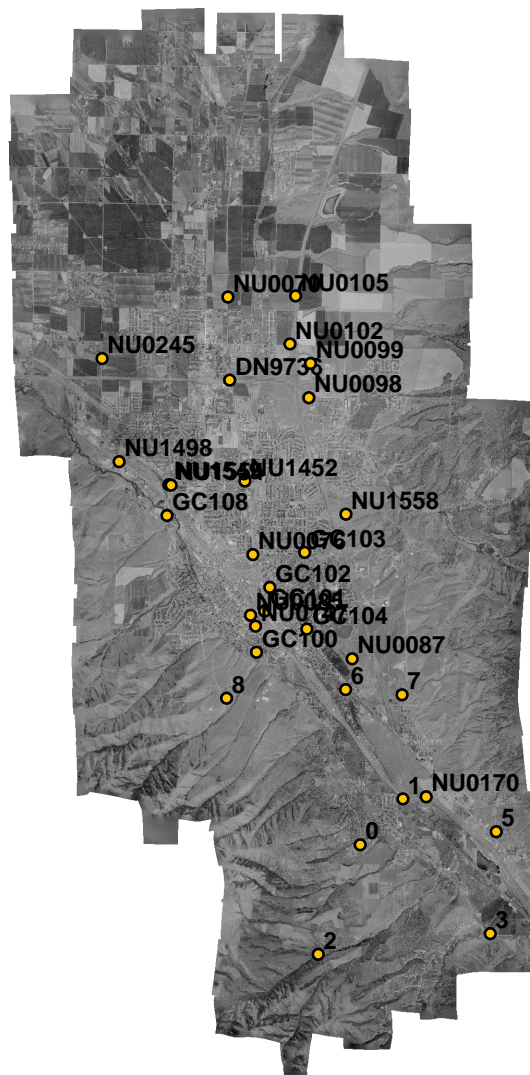


Fig. 4. GCP locations.

Label	X error (m)	Y error (m)	Z error (m)	Error (m)	Projections	Error (pix)
0	0.964446	-0.692272	0.196100	1.203267	6	0.611432
1	0.671207	0.207807	0.228931	0.738994	4	0.353665
2	-0.974633	0.800239	-0.012044	1.261125	4	0.455809
3	0.595268	-0.018974	-0.286377	0.660845	2	0.083282
5	-0.817220	0.284210	0.016377	0.865386	2	0.167841
6	-0.094184	0.045096	0.429867	0.442368	5	0.491925
7	0.263966	-0.089230	0.368816	0.462240	6	0.599609
8	-0.495072	0.033757	0.335058	0.598748	5	0.048461
DN9736	0.012745	0.119652	0.288391	0.312487	5	0.174650
GC100	-0.468617	0.474085	0.066255	0.669887	7	0.760627

Label	X error (m)	Y error (m)	Z error (m)	Error (m)	Projections	Error (pix)
GC101	-0.158351	-0.006546	-0.061189	0.169888	5	0.450210
GC102	-0.212088	-0.025088	0.329003	0.392242	5	0.671886
GC103	0.222030	-0.216454	0.428992	0.529324	6	0.507523
GC104	0.019127	-0.494286	-0.084013	0.501739	5	0.265588
GC108	0.212957	-0.462393	-0.218547	0.554005	4	0.502431
NU0070	0.129478	0.310412	-0.136256	0.362886	5	0.217843
NU0076	-0.494912	0.155471	0.532205	0.743203	6	0.296251
NU0085	0.108744	-0.109553	-0.511774	0.534546	5	0.455277
NU0087	-0.035355	-0.211065	-0.112381	0.241718	5	0.091327
NU0098	-0.465482	-0.247239	0.208324	0.566745	6	0.744235
NU0099	-0.310093	0.174799	-0.800011	0.875632	6	0.515430
NU0102	-0.170738	0.053479	0.483795	0.515818	5	0.447718
NU0105	-0.046554	0.338587	0.036668	0.343734	4	0.372498
NU0147	-0.259028	-0.404189	-0.517592	0.705951	6	0.684777
NU0170	0.398274	0.038222	-0.556058	0.685043	4	0.382287
NU0245	0.314949	0.468205	0.393098	0.687702	4	0.099067
NU1452	0.055403	-0.201724	-0.588210	0.624302	5	0.486815
NU1498	0.307389	-0.499410	0.206708	0.621793	4	0.233974
NU1549	0.359793	0.232178	-0.104375	0.440740	5	1.414524
NU1554	0.389068	0.204449	-0.518696	0.679866	6	0.696022
NU1558	0.085129	-0.254006	-0.024930	0.269049	4	0.183532
Total	0.417006	0.322312	0.356544	0.636320	151	0.537397

Table. 2. Control points.

Digital Elevation Model

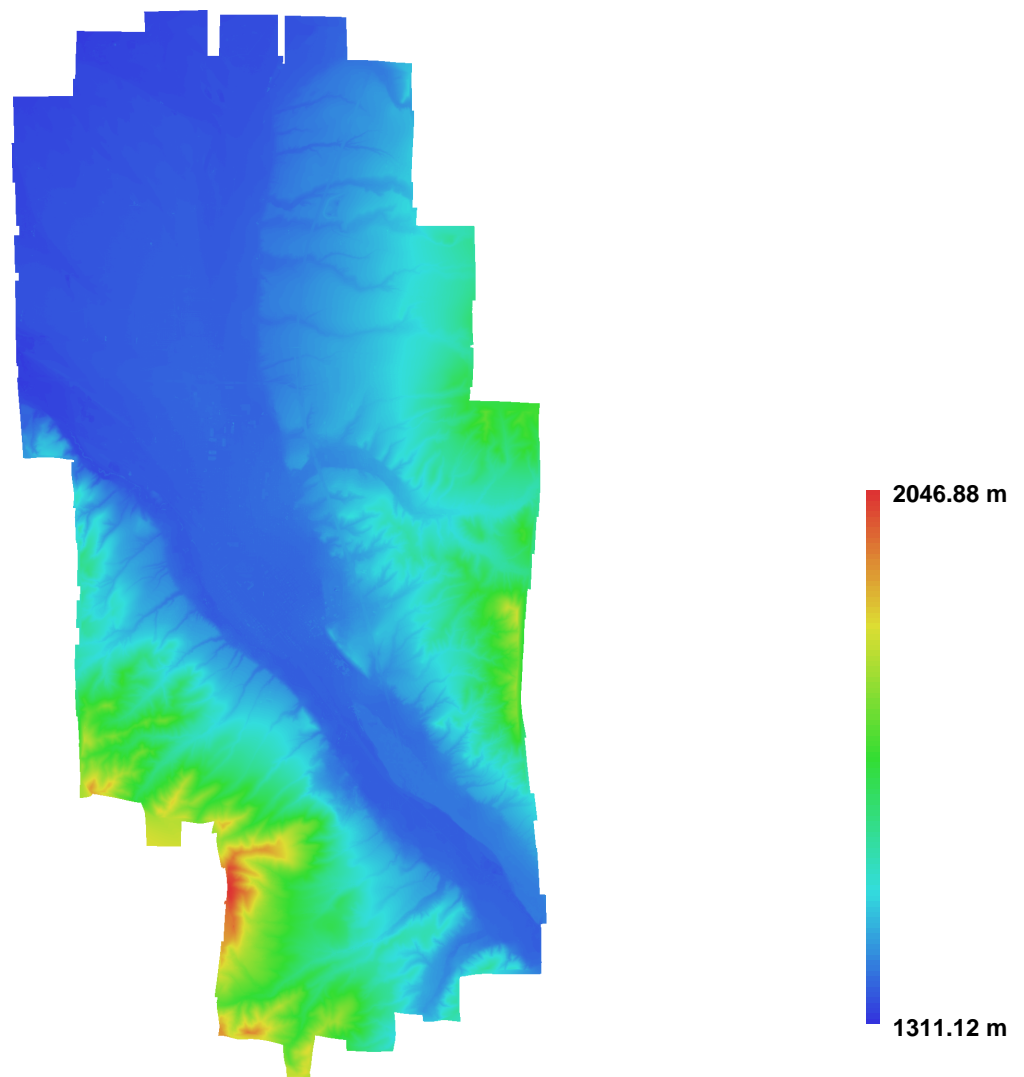


Fig. 5. Reconstructed digital elevation model.

Resolution: 0.51677 m/pix

Point density: 3.7446 points per sq m