

ODM Quality Report

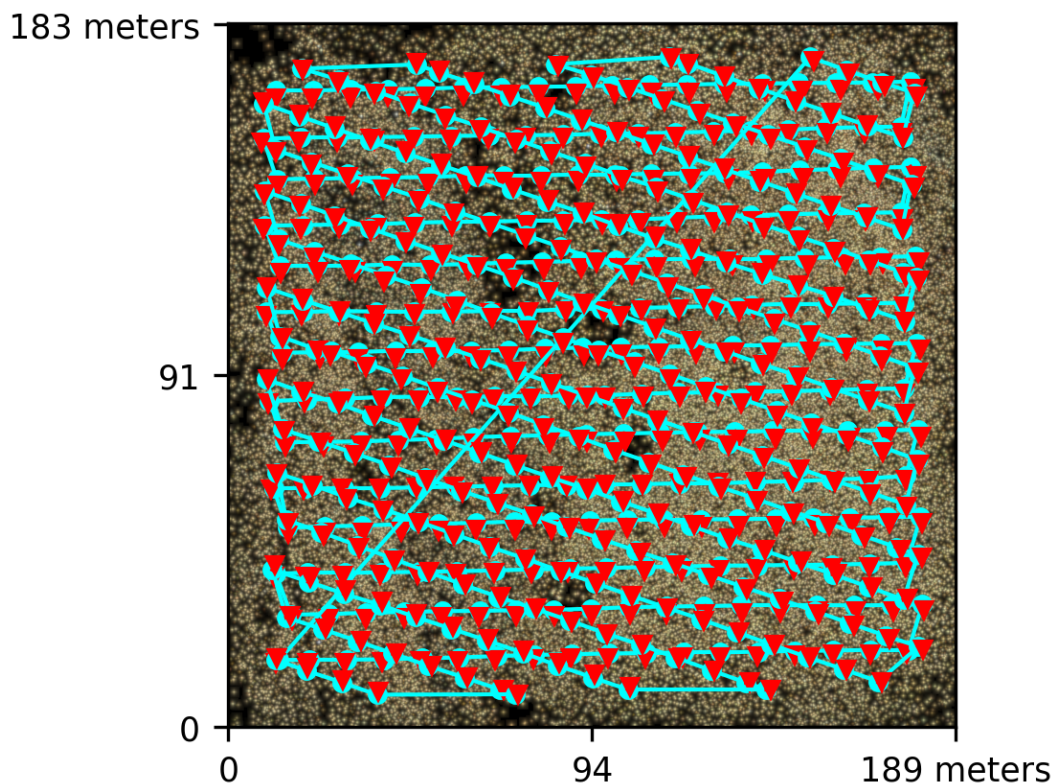
Processed with ODM version 2.8.8

Dataset Summary

Date	07/08/2022 at 17:31:23
Area Covered	0.028489 km ²
Processing Time	89.0h:16.0m:49.0s
Capture Start	15/06/2022 at 04:03:12
Capture End	15/06/2022 at 05:06:02

Processing Summary

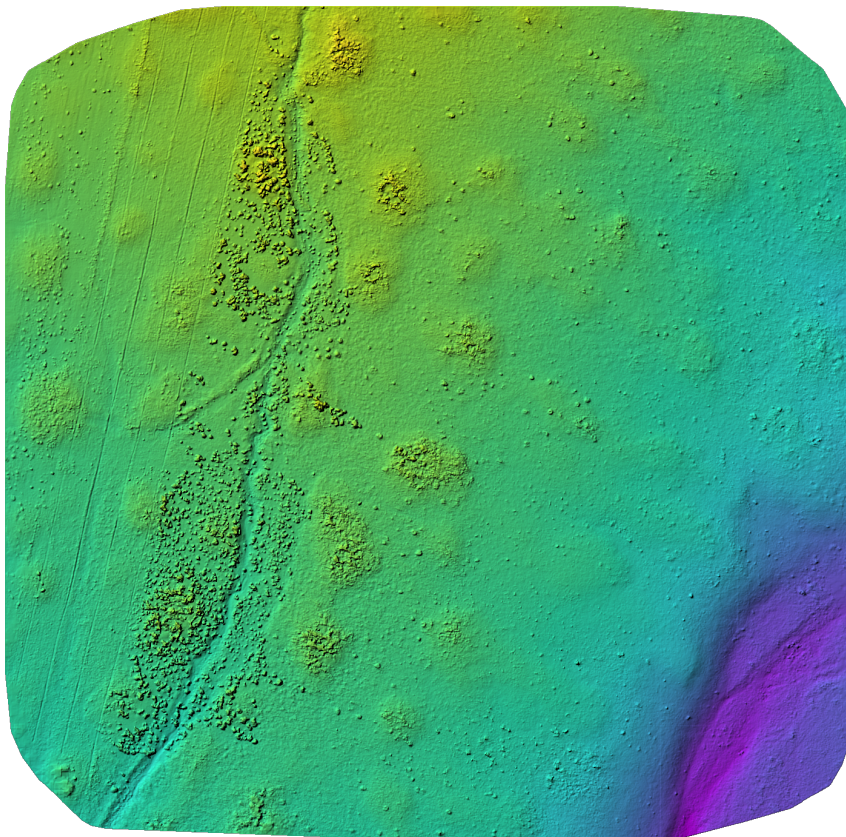
Reconstructed Images	518 over 521 shots (99.4%)
Reconstructed Points (Sparse)	7803465 over 7915731 points (98.6%)
Reconstructed Points (Dense)	490,756,411 points
Average Ground Sampling Distance (GSD)	1.0 cm
Detected Features	229,755 features
Reconstructed Features	54,766 features
Geographic Reference	GPS and GCP
GPS / GCP errors	9.84 / 0.04 meters



Previews



Orthophoto



Digital Surface Model



1,065.58m

1,075.17m

Survey Data



■ 2 ■ 3 ■ 4 ■ 5+

GPS/GCP/3D Errors Details

GPS	Mean	Sigma	RMS Error
X Error (meters)	-0.324	0.403	0.518
Y Error (meters)	-0.746	0.724	1.039
Z Error (meters)	-9.770	1.224	9.846
Total			9.841

GCP	Mean	Sigma	RMS Error
X Error (meters)	-0.000	0.007	0.007
Y Error (meters)	-0.004	0.008	0.009
Z Error (meters)	-0.017	0.053	0.055
Total			0.039

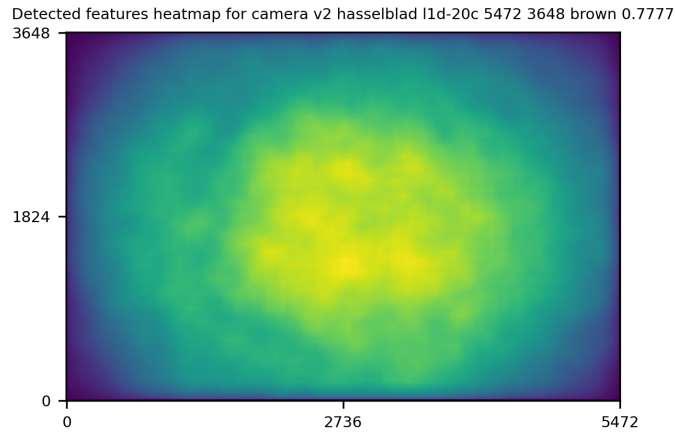
3D	Mean	Sigma	RMS Error
X Error (meters)	0.005	0.008	0.009
Y Error (meters)	0.006	0.010	0.012
Z Error (meters)	0.023	0.034	0.041
Total			0.025

	Absolute	Relative
Horizontal Accuracy CE90 (meters)	0.015	0.019
Vertical Accuracy LE90 (meters)	0.050	0.053

Ground Control Point Error

ID	Error X (m)	Error Y (m)	Error Z (m)
GCP-0	-0.005	-0.009	-0.014
GCP-1	-0.001	0.001	0.013
GCP-2	0.000	0.003	0.022
GCP-3	0.019	0.001	-0.150
GCP-4	-0.000	-0.010	0.021
GCP-5	-0.002	0.010	-0.012
GCP-6	-0.007	-0.006	0.032
GCP-7	-0.005	-0.013	-0.013
GCP-8	-0.003	-0.015	-0.050

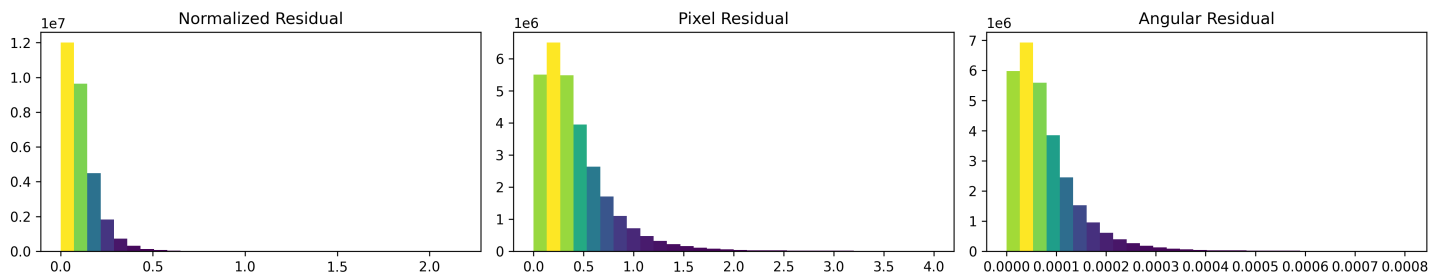
Features Details



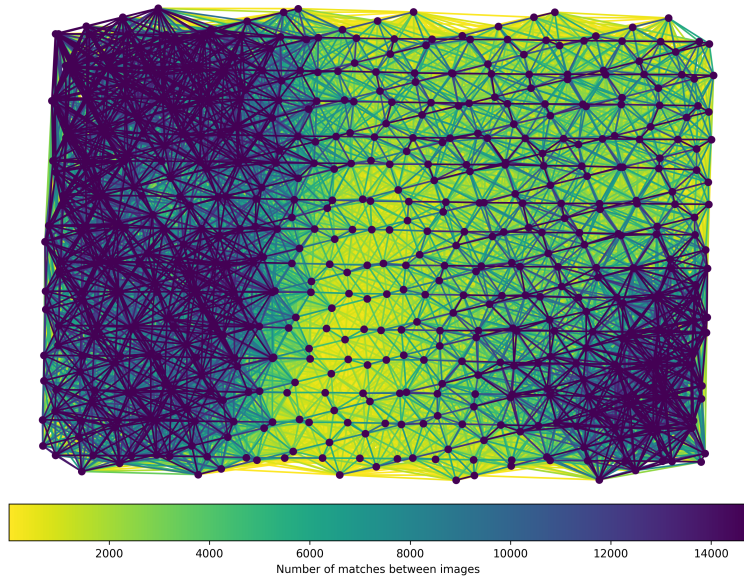
	Min.	Max.	Mean	Median
Detected	80299	300059	215538	229755
Reconstructed	16949	112619	56716	54766

Reconstruction Details

Average Reprojection Error (normalized / pixels / angular)	0.11 / 0.43 / 0.00008
Average Track Length	3.76 images
Average Track Length (> 2)	6.31 images



Tracks Details



Length	2	3	4	5	6	7	8	9	10
Count	4606544	1232832	558905	319200	210700	150522	114420	90275	73131

Camera Models Details

v2 hasselblad l1d-20c 5472 3648 brown 0.7777

	k1	k2	k3	p1	p2	focal	aspect_ratio	cx	cy
Initial	0.0000	0.0000	0.0000	0.0000	0.0000	0.7778	1.0000	0.0000	0.0000
Optimized	-0.2785	-0.0120	0.1004	0.0094	0.0029	0.9631	1.0000	-0.0041	-0.0323

