

Valuing Education & Industry Partnerships



Western provides equal opportunity in education and employment. Learn more: westernwyoming.edu/NDS

Meet Your Presenter



Amy Murphy

Dean, Outreach and Workforce Development
Western Wyoming Community College

*Enter With **Passion**, Leave With **Purpose**.*

Experience with Developing Collaborative Programs with Industry

- Industrial Maintenance
- Diesel Technology
- Plant Operations
- Electrical and Instrumentation Technology
- Many more, but the most recent...
- **POWERLINE TECHNOLOGY**

Powerline Technology Overview

Meeting with Key Personnel

Black Hills Energy

Laurie Farkas
Damien Parks
Alan Stoinski

Union Wireless

Lisa Jones
Matt Myers
Megan Neal

IBEW

Scott Long
Mark Maumau
Kevin Owen
Carl Woodland

Utility Workers Union of America

Chauffe Schirmer

Intermountain Electric

JD Hall

Western Wy. Community College

Lance Caldwell
Dr. Kim Dale
Carlton Dewick
Amy Murphy
Dr. Cliff Wittstruck

Lower Valley Energy

Brian Tanabe

Rocky Mountain Power

Chris Nelson
Ray Summa
Ron Wild

Wyoming Rural Electrical Association

Shawn Taylor

*Enter With **Passion**, Leave With **Purpose**.*

Program Mission

To ensure the demand for **skilled** linepersons are met, and at the same time, the required **essential skills** have been embedded.

Program Curriculum

- Reviewed existing curriculum
- Designed some new courses
- Repackaged into new program



Program Curriculum

Recommended Curriculum Sequence Courses			
Prefix	Number	Title	Credits
Fall Semester 1st Year			
TECH	1600	Industrial Safety	3
ELTR	1520	DC Electricity	3
ELTR	1530	AC Electricity	3
POLT	1510	Powerline Technology I	3
POLT	1520	Powerline Technology II	3
Total Fall Semester 1st Year			15
Spring Semester 1st Year			
TECH	1680	Reading Technical Schematics	3
TECH	1000	Introduction to Technical Math	3
POLT	1530	Powerline Technology III	3
POLT	1540	Powerline Technology IV	3
ELTR	2820	Power Distribution	3
Total Spring Semester 1st Year			15

Fall Semester 2nd Year			
ENGL	1010	English Composition	3
PHYS	1050	Concepts of Physics	4
COMM	1030	Interpersonal Communications	3
HLED	1221	Standard First Aid and CPR	2
CMAP	1200	Computer Information Systems	3
Total Fall Semester 2nd Year			15
Spring Semester 2nd Year			
ENGL	2005	Writing in Technology and the Sciences	3
MGT	1000	Introduction to Supervision	3
HLED	Elective	Additional HLED Course	3
POLS	1000	American & Wyoming Government	3
ELTR	Elective	Additional ELTR Course	3
Total Spring Semester 2nd Year			15
Total Credit Hours for the Associate's Degree			60
Total Credit Hours for the Certificate			35
Courses highlighted in red are required to earn the Powerline Technology Certificate. Sequence for taking the courses will be modified so a student can complete the Certificate within one year.			

Enter With *Passion*, Leave With *Purpose*.

Program Goals

Challenging Careers

Stable Careers

Careers with

Growth Opportunity

Well-Paying Careers

Local Careers

*Enter With **Passion**, Leave With **Purpose**.*

Key to the Program

Corporate/Government Partners



*Enter With **Passion**, Leave With **Purpose**.*

Continuous Quality Improvement

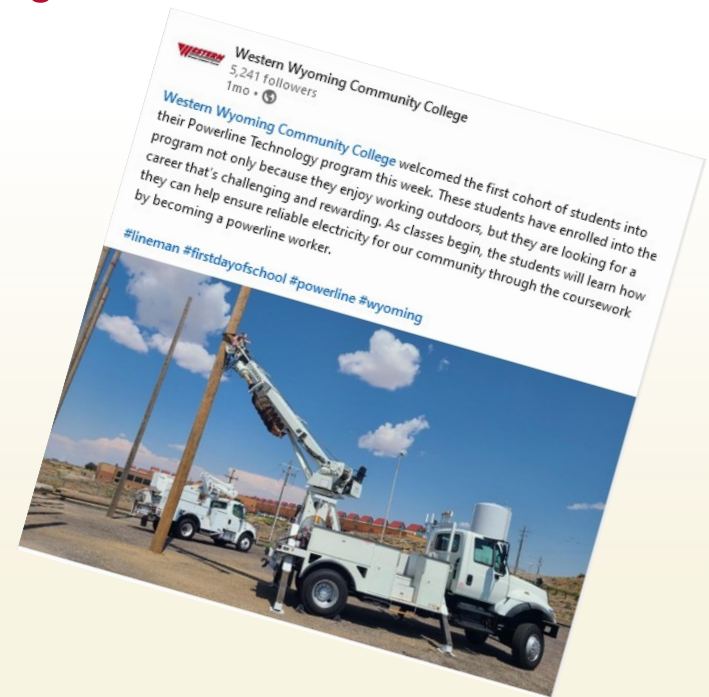
ADVISORY BOARD



*Enter With **Passion**, Leave With **Purpose**.*

Marketing/Promotion

Methods of communication
include print and digital



Enter With *Passion*, Leave With *Purpose*.

Replicate our Success

- *Know Your Community and their Workforce Needs*
- *Identify the Key Partners*
- *Develop Relationships and Strategies*
- ***LISTEN** to Your Employer Needs*
- *Communicate, Communicate, Communicate*
- *Implement Program and Marketing Plan*
- *Obtain Feedback and Continuous Quality Improvement*

Contact Information



Amy Murphy

Dean, Outreach & Workforce Development

amurphy@westernwyoming.edu

(307) 382-1616

*Enter With **Passion**, Leave With **Purpose**.*